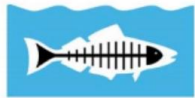




Southern California Water Dialogue

March 24, 2021





Heal the Bay

laane»

A NEW ECONOMY FOR ALL



LOS ANGELES
WATERKEEPER®



NATURE
FOR ALL

PROTECT • CREATE • CONNECT



TREEPEOPLE



SCOPE

Pacoima



Beautiful

The Nature
Conservancy



Protecting nature. Preserving life.



RESOURCES LEGACY FUND
Creative Solutions. Lasting Results.



NATURAL
RESOURCES
DEFENSE
COUNCIL

WATER
FOUNDATION

Our Members



Yes on Measure W



YES ON W

Twitter Party

**Monday, November 5th
12pm - 1pm**

Join @YesonWforWater for a Twitter Party!
We're days away from a once-in-a-generation
opportunity to secure safe and clean water for
Los Angeles County. Help us spread
the word before Election Day!

Questions: yesonwforwater@gmail.com



phonebank with us

THUR, NOV. 1ST, 4-8PM
LAANE, 464 LUCAS AVE, LA
FOOD PROVIDED - BYO PHONE

[RSVP: scabrera@laane.org](mailto:RSVP:scabrera@laane.org)



Safe, Clean Water Program Goals

- Increase drought preparedness
- Improve public health
- Leverage funding sources
- Invest in multi-benefit projects
- Prioritize Nature-Based Solutions
- Provide a spectrum of project sizes



Safe, Clean Water Program Goals

- Encourage innovation
- Invest in scientific research
- Provide DAC benefits
- Provide Regional Program funds
- Adaptively manage
- Promote green jobs
- Ensure ongoing O&M



Measure W – Year 1 in Review

Round 1 (funded)

- \$95 Million Invested
- 41 Regional Infrastructure
- 26 Technical Resources
- 4 Scientific Studies
- 12 Watershed Coordinators

Round 2 (under review)

- 59 Regional Infrastructure
- 14 Technical Resources
- 6 Scientific Studies

Good Jobs: Year 1 Outcomes

MEASURE W: YEAR 1



**41 projects
selected**

**\$294 million
awarded in
stormwater
infrastructure**

\$4.4M

investment in
ongoing
operations and
maintenance...

...creating job
opportunities for

**Laborers
Maintenance
Supervisors
Tree Trimmers
Gardeners**

75%

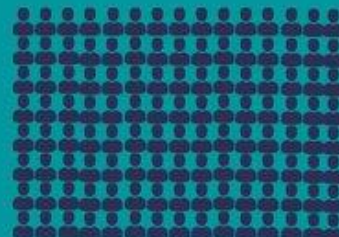
of all capital
costs covered by
Project Labor
Agreements



All

projects
covered by
Targeted Local
Hire policies

**Over 1,200
construction
jobs are
created by
the 41
projects
selected**



Each person represents 10 jobs
created by the SCWP program!

2021 FOCUS



- **Implementation**
 - ✓ Get the best projects funded
 - ✓ Communities engaged in decision-making
- **Improvement**
 - ✓ Adaptive management to ensure SCWP achieves **all** enviro & community goals
- **Integration**
 - ✓ Leverage (local & regional) SCWP \$\$ with other funding (WHAM)
 - ✓ Ensure other policies & regulations aligned to further SCWP goals

Nature-Based Solutions (NBSs)

NATURE-BASED & VEGETATED PRACTICES

Bioretention



Biodetention with Underdrains



Green Roofs



Constructed Stormwater Wetlands



Outfall Retrofits



Wet and Dry Detention Basins



Subsurface Infiltration (NBS / Not Vegetated) and Detention (Not-NBS)



Permeable Pavement (NBS / Not Vegetated)



Cisterns (Not-NBS)



All Green Stormwater Infrastructure (GSI) or Low Impact Development (LID)

METHODS	GOOD	BETTER	BEST
Vegetation/Green Space	Use of climate-appropriate, eco-friendly vegetation (groundcover, shrubs, and trees) / green space 5%-15% covered by new climate-appropriate vegetation	Use of native, climate-appropriate, eco-friendly vegetation (groundcover, shrubs, and trees) / green space 16%-35% covered by new native vegetation	Establishment of plant communities with a diversity of native vegetation (groundcover, shrubs, and trees) / green space that is both native and climate-appropriate More than 35% covered by new native vegetation

Green Infrastructure: Benefits by the Numbers

Air Quality

- **6.9 g** average ozone reduction per square meter of tree canopy (Nowak, 2006)
- **10% reduction in ozone** by converting 15% of manmade surfaces in LA Basin to vegetative cover (City of L.A., 2006)

Crime & Safety

- **12% decrease in crime** rate associated with 10% increase in tree cover (Troy et. al. 2012)

Water Conservation

- **200,000 gallons (0.6 acre-ft.)**, potentially collected annually from a 1-acre impervious parcel in L.A. (estimate)
- **\$720/acre-ft.** Benefit of groundwater recharge based on difference of cost of imported water from MWD and local groundwater extraction and treatment. (DRI, 2015)

Habitat/ Ecosystem

- **1 acre of habitat** created for every 25 acres of impervious surface area managed (estimate)

Heat Island Effect

- **6°F cooler** by converting 15% of manmade surfaces in LA Basin to vegetated cover (LBNL, 2006)

Public Health

- **\$21M and \$51M in annual economic loss** due to **1.5M swimmers** contracting gastrointestinal illnesses at 28 L.A. County beaches. (Given et. al. 2006)

* Water conservation and public health benefit can also be achieved by grey-infrastructure projects

Community Investment Benefits (i.e., multi-benefit)

- **Address true community NEED**
- **Benefits ABOVE/Beyond WQ & WS**
- **Specific METRICS**
- **Eventually, tie to NBS**



- Must be **CIB and/or NBS** (not regional WQ/WS) **AND**
- Located **IN** DAC (not upstream; not downstream) **AND**
- Provide benefits those communities **NEED AND**
- **ONLY** those aspects of project that provide community benefits count towards 110%

Community Engagement/Support

Utilize **Spectrum of Community Engagement to Ownership**

- Not just projects where info **SHARED** with community but
- Projects that at a minimum invite and are responsive to community input, and ultimately
- Projects that give full ownership and decision-making to communities



Living Streets

Westwood Greenway



Neighborhood Scale Nature Based Solutions Woodman Avenue Median Retrofit

Section
(Looking south)



Constructed Wetlands

South LA Wetlands



Pocket Parks

Larch Avenue Park

FROM LOT TO SPOT



Active Transportation Rail to River Corridor

South LA / Southeast Los Angeles



Existing Slauson/Compton Intersection



Revitalized Slauson Corridor contingent on funding

Transportation Benefits

- Enhances LA Bicycle/ Pedestrian Network
- Connects multiple bus and rail lines (Blue, Crenshaw, Silver) and key destinations

Environmental Health Benefits

- Shade trees, drought tolerant landscaping, lighting
- Bioswales for stormwater retention

Community Health Benefits

- Community event and recreation space
- Mitigate urban heat island effects
- Increased access to green space
- Benefits identified via community engagement

2020 OWLA Supported Projects

- MacArthur Lake Rehabilitation Project
- Monteith Park and View Park Green Alley Stormwater Improvements Project
- Salt Lake Park Infiltration Cistern
- Hermosillo Park Regional Stormwater Project
- East Los Angeles Sustainable Median Stormwater Capture Project
- Hasley Canyon Park Stormwater Improvements Project
- Rory M Shaw Wetlands Park Project
- Active Transportation Rail to River Corridor Project

Other Opportunities

- WHAM
- 10X10
- Watershed Coordinators



An underwater scene with a blue background, numerous small fish swimming, and golden-brown seaweed on the left and bottom. A semi-transparent blue rectangle is overlaid in the center, containing text.

Thank You!

Annelisa Moe
amoe@healthebay.org

